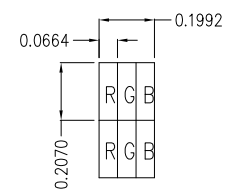
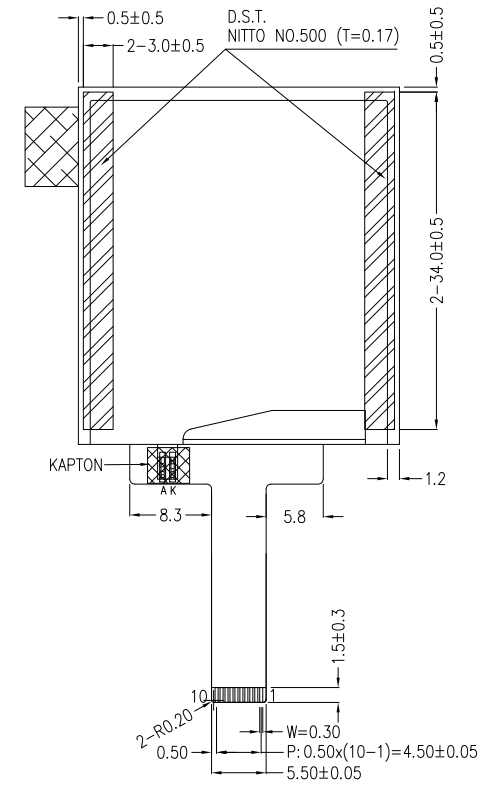
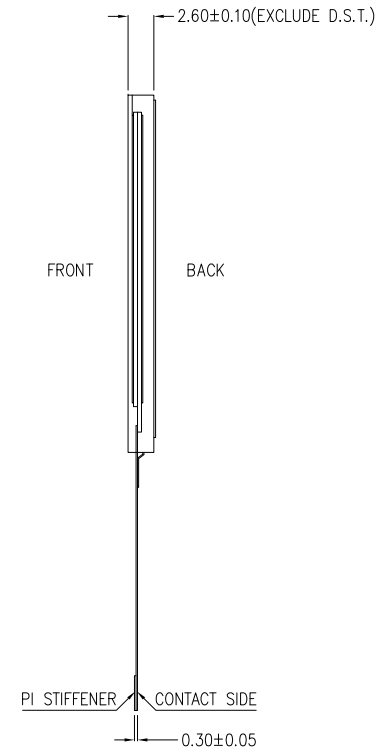
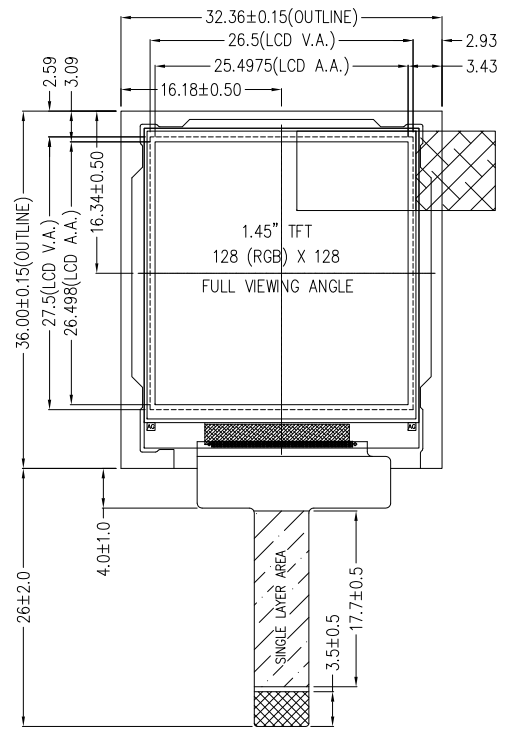
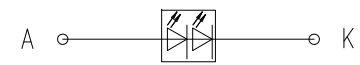


PIN ASSIGNMENT	
PIN	SYMBOL
1	A
2	K
3	SPI3W/SPI4W
4	VDD
5	VSS
6	/CS
7	RESET
8	SDA
9	SCL
10	RS




PIXEL DETAIL



BACKLIGHT CIRCUIT DIAGRAM

- NOTES:
1. DISPLAY TYPE: TFT, TRANSMISSIVE, NORMALLY BLACK
  2. OPERATING VOLTAGE: VDD=2.8V (TYP.)
  3. VIEWING DIRECTION: FULL VIEWING ANGLE
  4. DRIVER IC: ST7735V3
  5. OPERATING TEMP.: -20°C ~ 70°C
  6. STORAGE TEMP.: -30°C ~ 80°C
  7. LED BACKLIGHT: WHITE DUAL-DICE LED, IF=20mA, VF=5.6V~6.8V
  8. SURFACE LUMINANCE: 500CD/M<sup>2</sup> (TYP.)
  9. TOP POLARIZER SURFACE TREATMENT: GLARE
  10. GENERAL TOLERANCE: ±0.2MM
  11. ROHS COMPLIANT

 <b>MULTI-INNO TECHNOLOGY CO., LTD.</b>			
DRAWN BY:	RITA	2023.10.23	SCALE : 1/1
CHECKED BY:			UNIT: mm
APPROVED BY:			MODULE P/N: MI0145F1T-1
VERSION NO:	01		DESCRIPTION: TFT MODULE

VER.	DESCRIPTION	REVISER	DATE
01	FIRST ISSUE	RITA	2023.10.23
	REVISED DESCRIPTION		